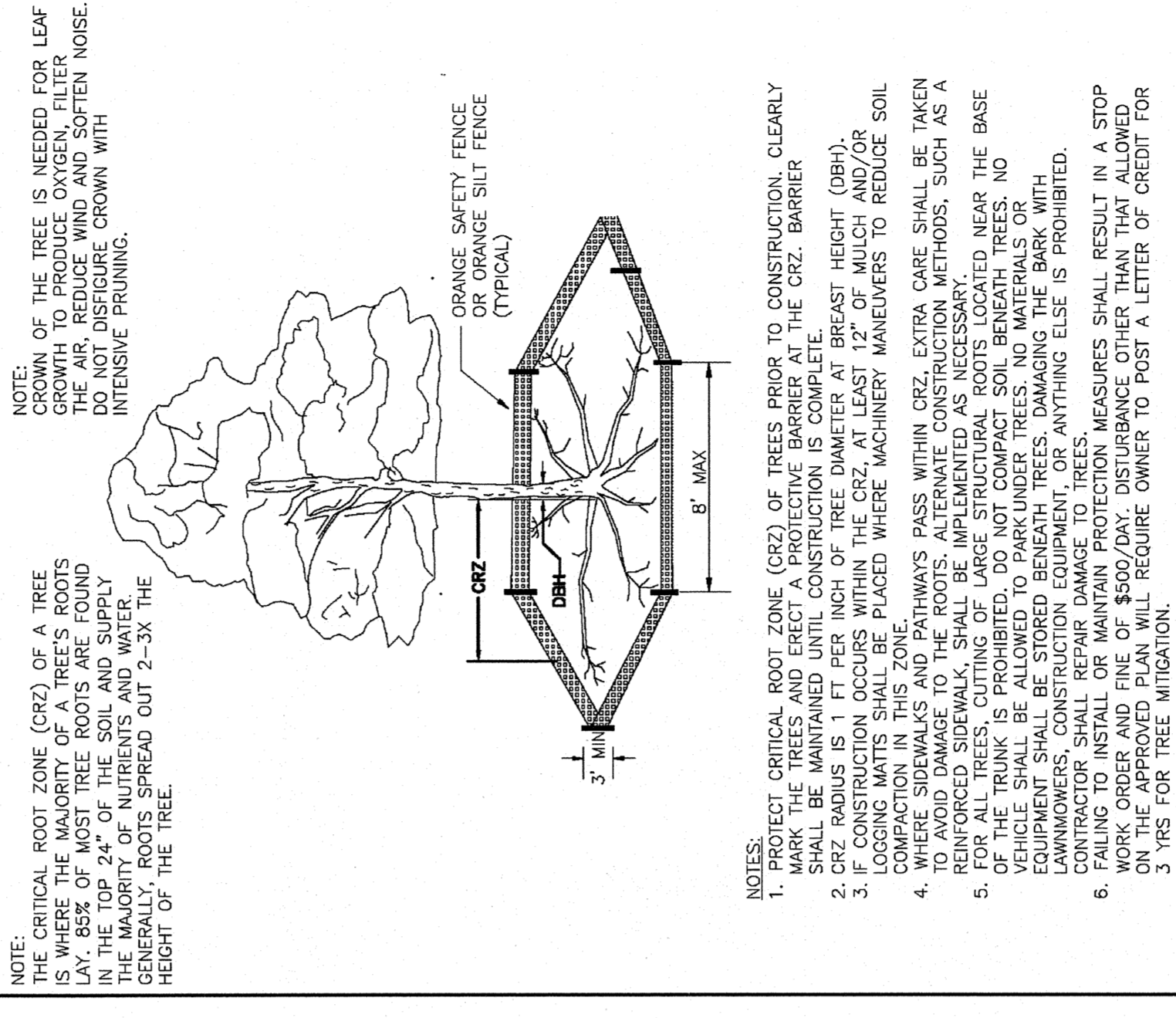
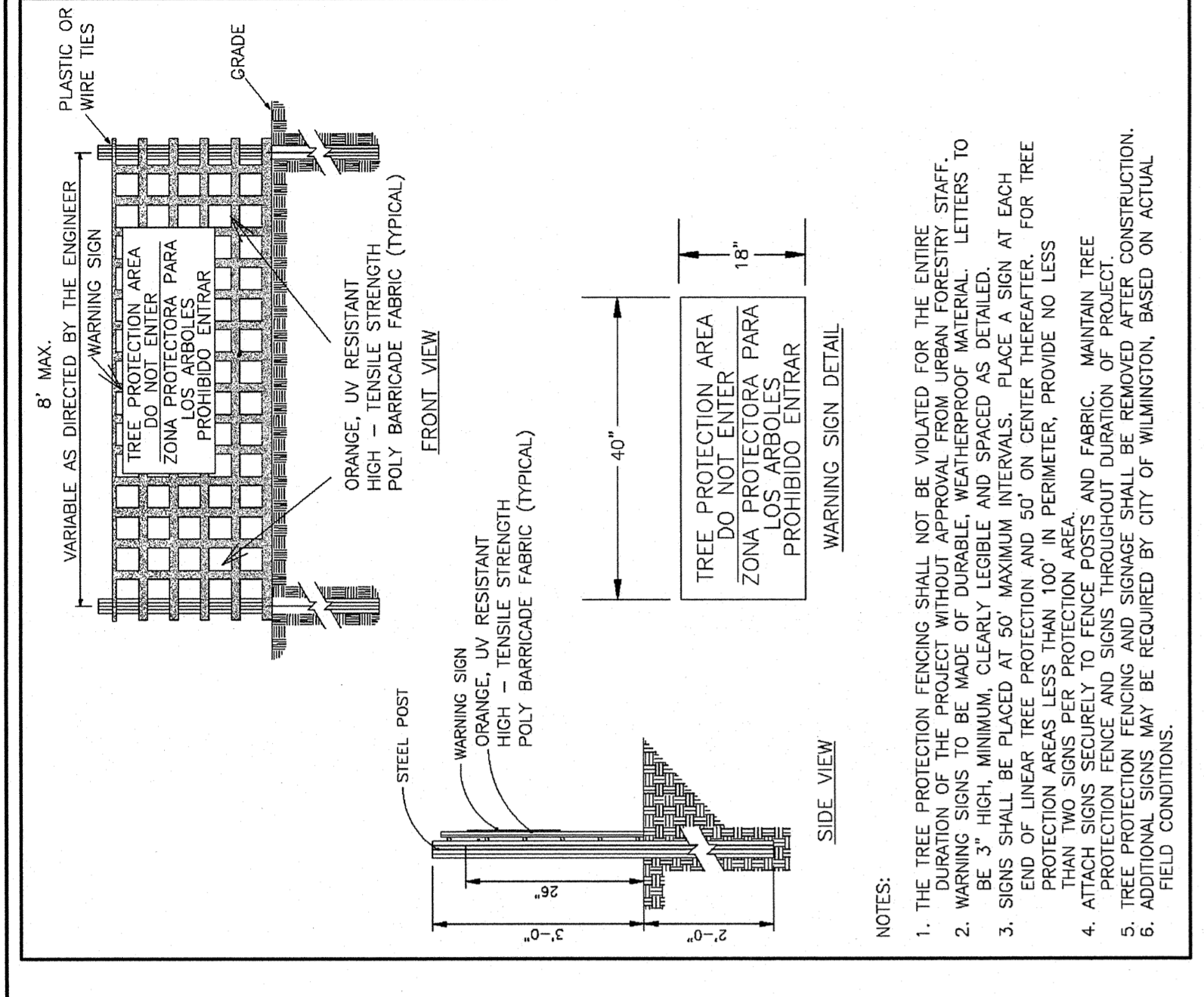


TREE INVENTORY DATA

TREES TO BE REMOVED:	MABLE:	GUM:
12" - 25	8" - 12	8" - 5
13" - 25	9" - 5	9" - 2
14" - 25	10" - 4	10" - 1
15" - 17	11" - 1	11" - 1
16" - 9	12" - 2	12" - 1
17" - 6	13" - 2	13" - 1
18" - 3	14" - 2	14" - 1
19" - 3	15" - 2	15" - 1
20" - 3	16" - 2	16" - 1
21" - 1	17" - 2	17" - 1
22" - 1	18" - 2	18" - 1

180 TREES TOTAL TO BE REMOVED



TREE PROTECTION DETAILS

NOTES:

- PROTECT CRITICAL ROOT ZONE (CRZ) OF TREES PRIOR TO CONSTRUCTION. CLEARLY MARK THE TREES AND ERECT A PROTECTIVE BARRIER AT THE CRZ. BARRIER SHALL BE MAINTAINED UNTIL CONSTRUCTION IS COMPLETE.
- CRZ SHALL BE MAINTAINED UNTIL CONSTRUCTION IS COMPLETE.
- IF CONSTRUCTION OCCURS WITHIN THE CRZ AT LEAST 12" OF MULCH AND/OR LOGGING MATS SHALL BE PLACED WHERE MACHINERY MANEUVERS TO REDUCE SOIL COMPACTION IN THIS ZONE. ALWAYS PASS WITHIN CRZ. EXTRA CARE SHALL BE TAKEN TO AVOID DAMAGE TO THE ROOTS. ALTERNATE CONSTRUCTION METHODS, SUCH AS A REINFORCED SIDEWALK, SHALL BE IMPLEMENTED AS NECESSARY.
- FOR ALL TREES CUTTING LARGE STRUCTURAL ROOTS LOCATED NEAR THE BASE OF THE TREE, CUTTING SHALL BE DONE IN A STAGGERED MANNER. NO EQUIPMENT SHALL BE STORED BENEATH TREES. DAMAGING THE BARK WITH CHAINSaws SHALL BE PROHIBITED. ANYTHING ELSE IS PROHIBITED.
- CONTRACTOR SHALL REPAIR DAMAGE TO TREES.
- FAILING TO INSTALL OR MAINTAIN PROTECTION MEASURES SHALL RESULT IN A STOP WORK ORDER AND FINE OF \$500/DAY. DISTURBANCE OTHER THAN THAT ALLOWED IN THIS PERMIT SHALL BE PROHIBITED. CONTRACTOR SHALL REQUIRE OWNER TO POST A LETTER OF CREDIT FOR 3 YRS FOR TREE MITIGATION.

TREE REMOVAL PLAN
LIVE OAK BANKING COMPANY 3/FITPARK
 1741 TIBURON DRIVE
 WILMINGTON, NORTH CAROLINA 28403

OWNER/DEVELOPER
 W. LEE WILLIAMS
 EXECUTIVE VICE PRESIDENT
 LIVE OAK BANKSHARES, INC.
 1741 TIBURON DRIVE
 WILMINGTON, NC 28403
 910-795-1647
 910-790-8988

NORRIS & TUNSTALL
 CONSULTING ENGINEERS P.C.
 902 MARKET STREET
 WILMINGTON, NC 28401
 PHONE (910) 343-9653
 1429 ASH-LITTLE RIVER RD., NW
 ASH, NC 28820
 PHONE (910) 287-3900

License #C-3641
16169
 DES. JUST
 CDD. JPN
 DRW. NKS
 DATE 5/17/17



C1.1

SYMBOL	DATE	DESCRIPTION	BY
REVISIONS			
© 2017 NORRIS & TUNSTALL			

For each open utility cut of City streets, a \$325 permit shall be required from the City prior to occupancy and/or project acceptance.

NC DENR PWSS WATER PERMIT # _____ GPD _____
 WATER CAPACITY: _____ GPD _____
 DWQ SEWER PERMIT # _____
 SEWER CAPACITY: _____
 SEWER SHED # AND PLANT: _____
 SEWER TO FLOW THROUGH NEI: YES or NO (circle) _____

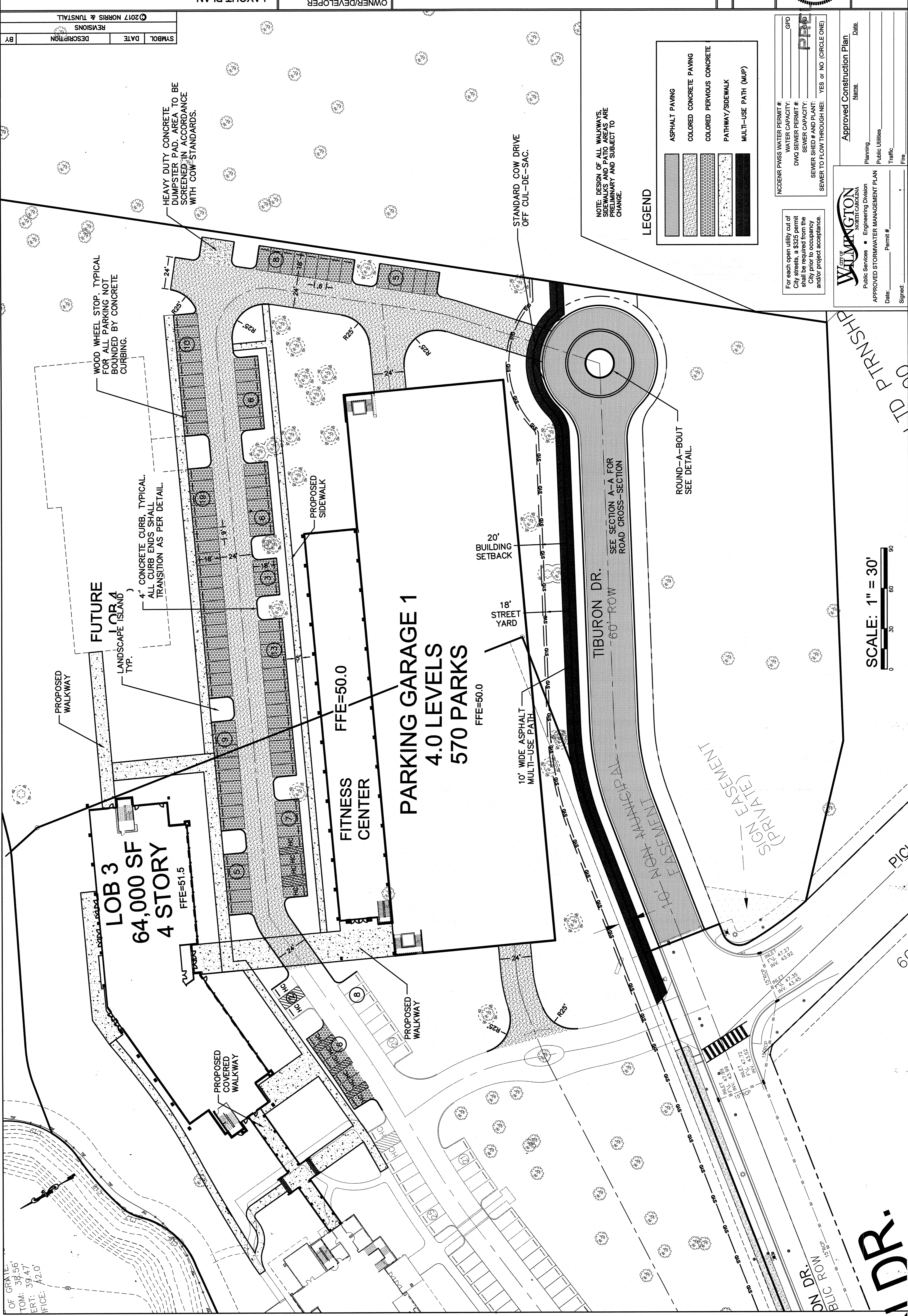
Approved Construction Plan
 Name: _____ Date: _____
 Planning: _____
 Public Utilities: _____
 Traffic: _____
 Fire: _____

WILMINGTON
 NORTH CAROLINA
 Public Services • Engineering Division
APPROVED STORMWATER MANAGEMENT PLAN
 Date: _____ Permit # _____
 Signed: _____

SCALE: 1" = 60'

EASEMENT (38'...)
 ZONED OR-1
 BK 531 PG 61
 3348 88 997
 LINA COSTAL COMPANY

OF GRATE:
 TOM: 38.56'
 ERT: 39.47'
 IFFICE: 42.0'



LOB 3
 64,000 SF
 4 STORY
 FFE=51.5

FITNESS CENTER
 FFE=50.0

PARKING GARAGE 1
 4.0 LEVELS
 570 PARKS
 FFE=50.0

FUTURE FOR 4
 LANDSCAPE ISLAND
 TYP.

4" CONCRETE CURB, TYPICAL.
 ALL CURB ENDS SHALL
 TRANSITION AS PER DETAIL.

WOOD WHEEL STOP, TYPICAL
 FOR ALL PARKING NOT
 BOUNDED BY CONCRETE
 CURBING.

HEAVY DUTY CONCRETE
 DUMPSTER PAD, AREA TO BE
 SCREENED IN ACCORDANCE
 WITH COW STANDARDS.

20' BUILDING
 SETBACK

18' STREET
 YARD

10' WIDE ASPHALT
 MULTI-USE PATH

TIBURON DR.
 60' ROW
 SEE SECTION A-A FOR
 ROAD CROSS-SECTION

ROUND-A-BOUT
 SEE DETAIL.

10' HIGH MANHOLE
 EASEMENT
 (PRIVATE)
 SIGN EASEMENT

LEGEND

- ASPHALT PAVING
- COLORLED CONCRETE PAVING
- COLORLED PERVIOUS CONCRETE
- PATHWAY/SIDEWALK
- MULTI-USE PATH (MUP)

NOTE: DESIGN OF ALL WALKWAYS,
 SIDEWALKS AND PATIO AREAS ARE
 PRELIMINARY AND SUBJECT TO
 CHANGE.

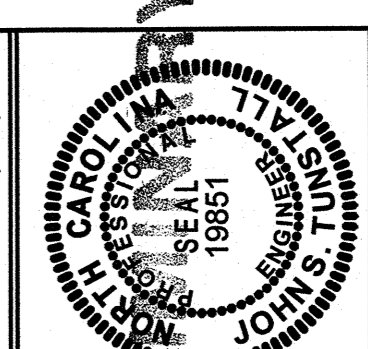
For each open utility cut of
 City streets, a \$325 permit
 shall be required from the
 City prior to occupancy
 and/or project acceptance.

NC DENR PWSS WATER PERMIT # _____
 WATER CAPACITY: _____ GPD
 DWQ SEWER PERMIT # _____
 SEWER CAPACITY: _____
 SEWER SHED # AND PLANT: _____
 SEWER TO FLOW THROUGH NEI: YES or NO (CIRCLE ONE)

CITY OF WILMINGTON
 NORTH CAROLINA
 Public Services • Engineering Division
 APPROVED STORMWATER MANAGEMENT PLAN
 Date: _____ Permit # _____
 Signed: _____

Approved Construction Plan
 Name: _____ Date: _____
 Planning Public Utilities Traffic
 Fire

SCALE: 1" = 30'



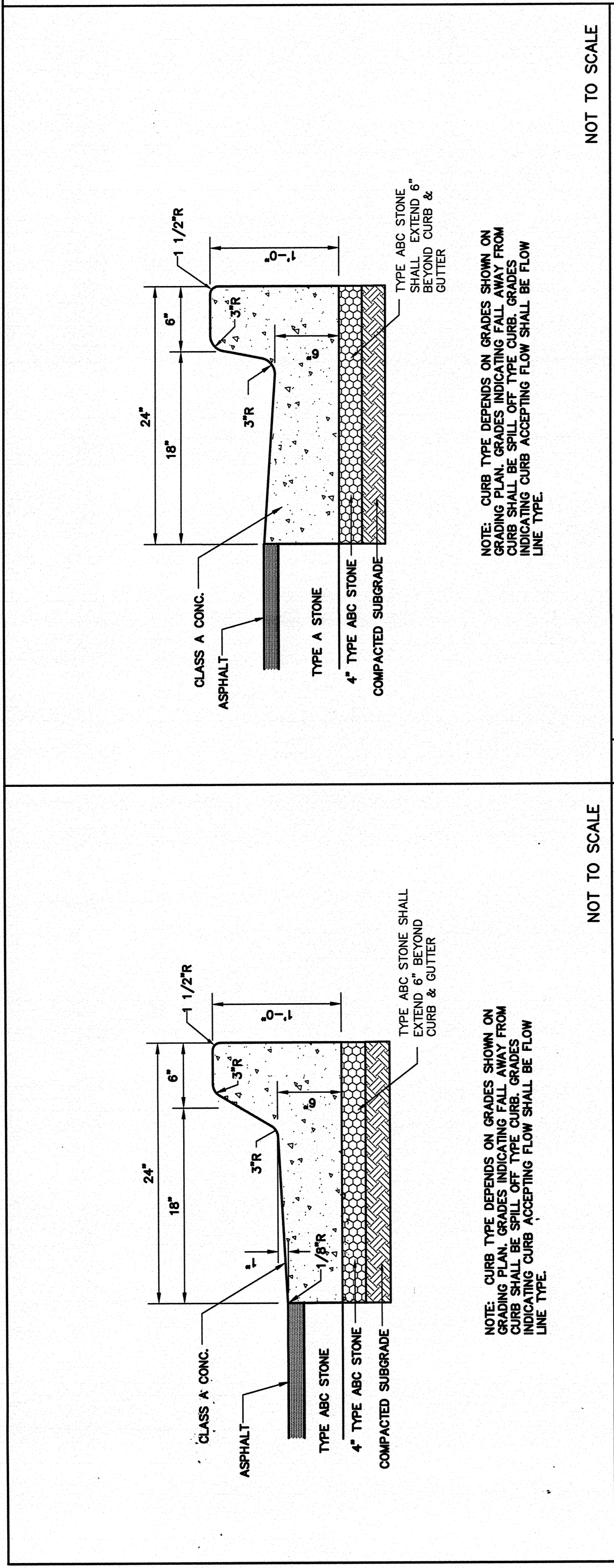
C4

NORRIS & TUNSTALL
 CONSULTING ENGINEERS P.C.
 902 MARKET STREET
 WILMINGTON, NC 28401
 PHONE (910) 343-9653
 1429 ASH LITTLE RIVER RD., NW
 ASH, NC 28420
 PHONE (910) 287-5900

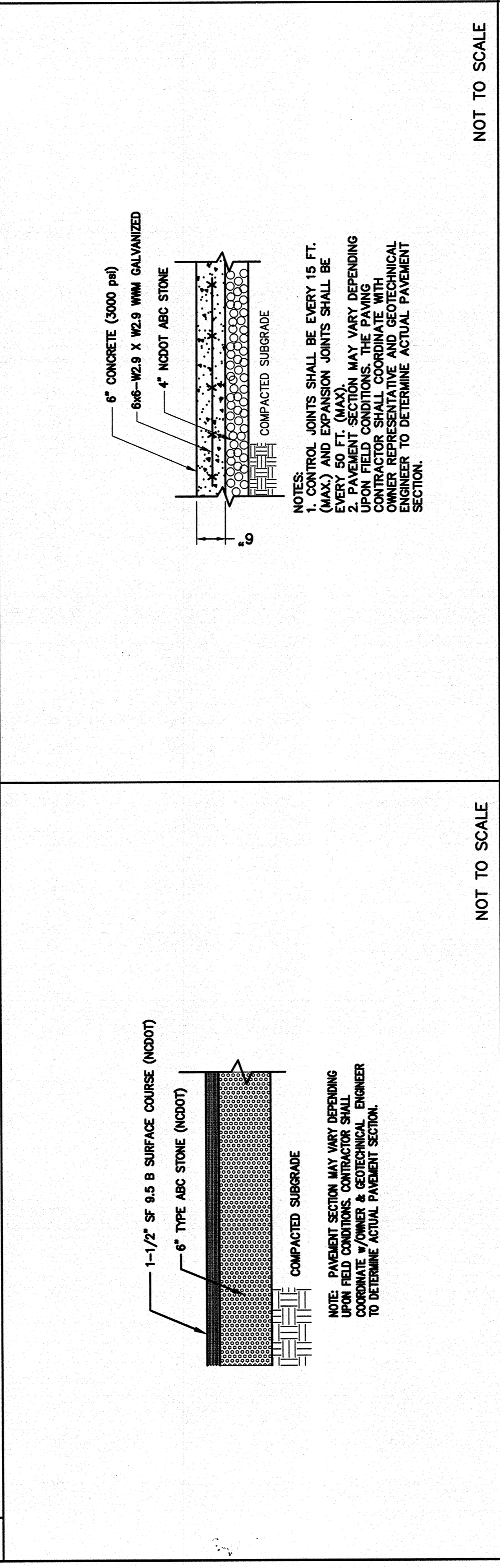
OWNER/DEVELOPER
 W. LEE WILLIAMS
 EXECUTIVE VICE PRESIDENT
 LIVE OAK BANCSHARES, INC.
 1741 TIBURON DRIVE
 WILMINGTON, NC 28403
 910-796-1647
 910-790-5868

LAYOUT PLAN
 LIVE OAK BANKING COMPANY 3/FITPARK
 1741 TIBURON DRIVE
 WILMINGTON, NORTH CAROLINA 28403

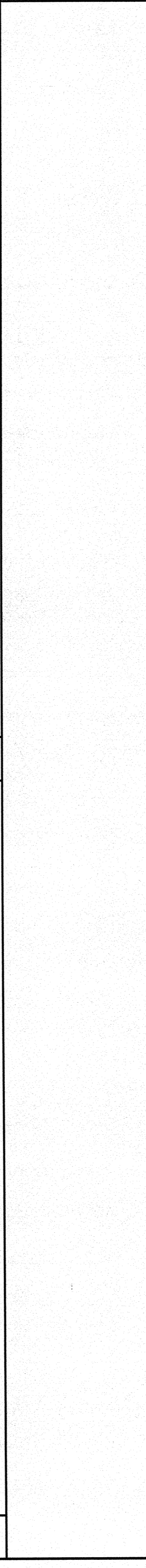
SYMBOL	DATE	DESCRIPTION	BY
		REVISIONS	
		© 2017 NORRIS & TUNSTALL	



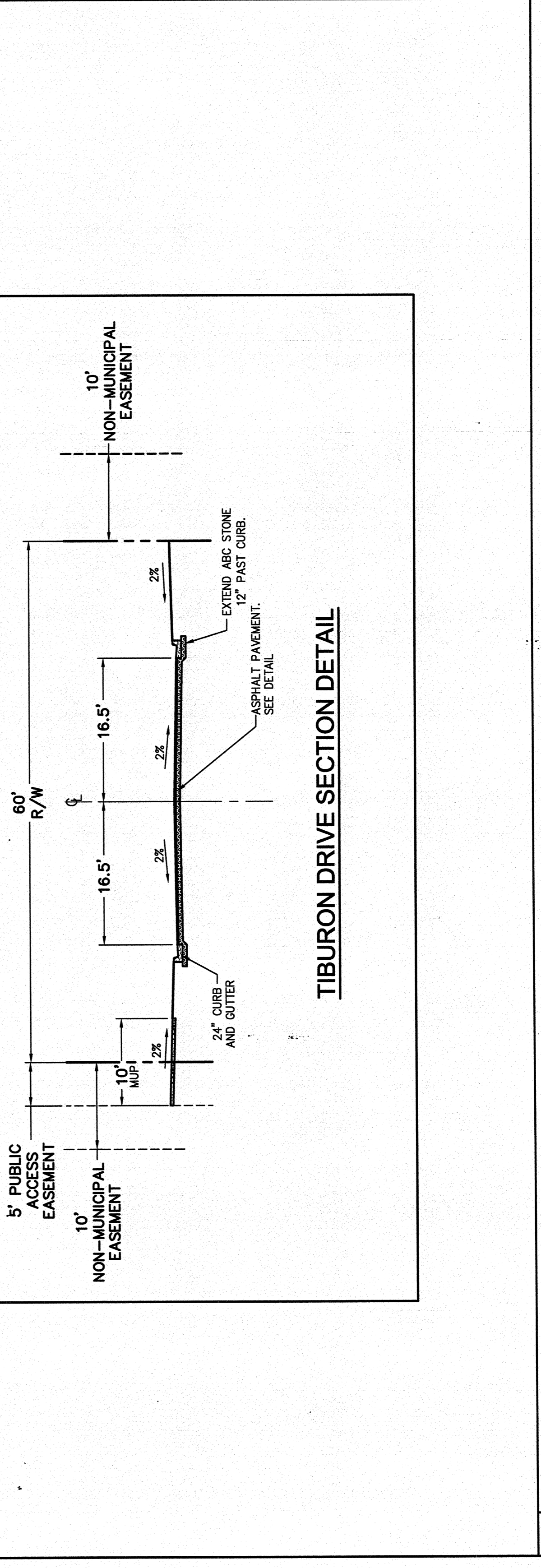
1 24" CURB AND GUTTER SECTION (SPILL-OFF) NOT TO SCALE



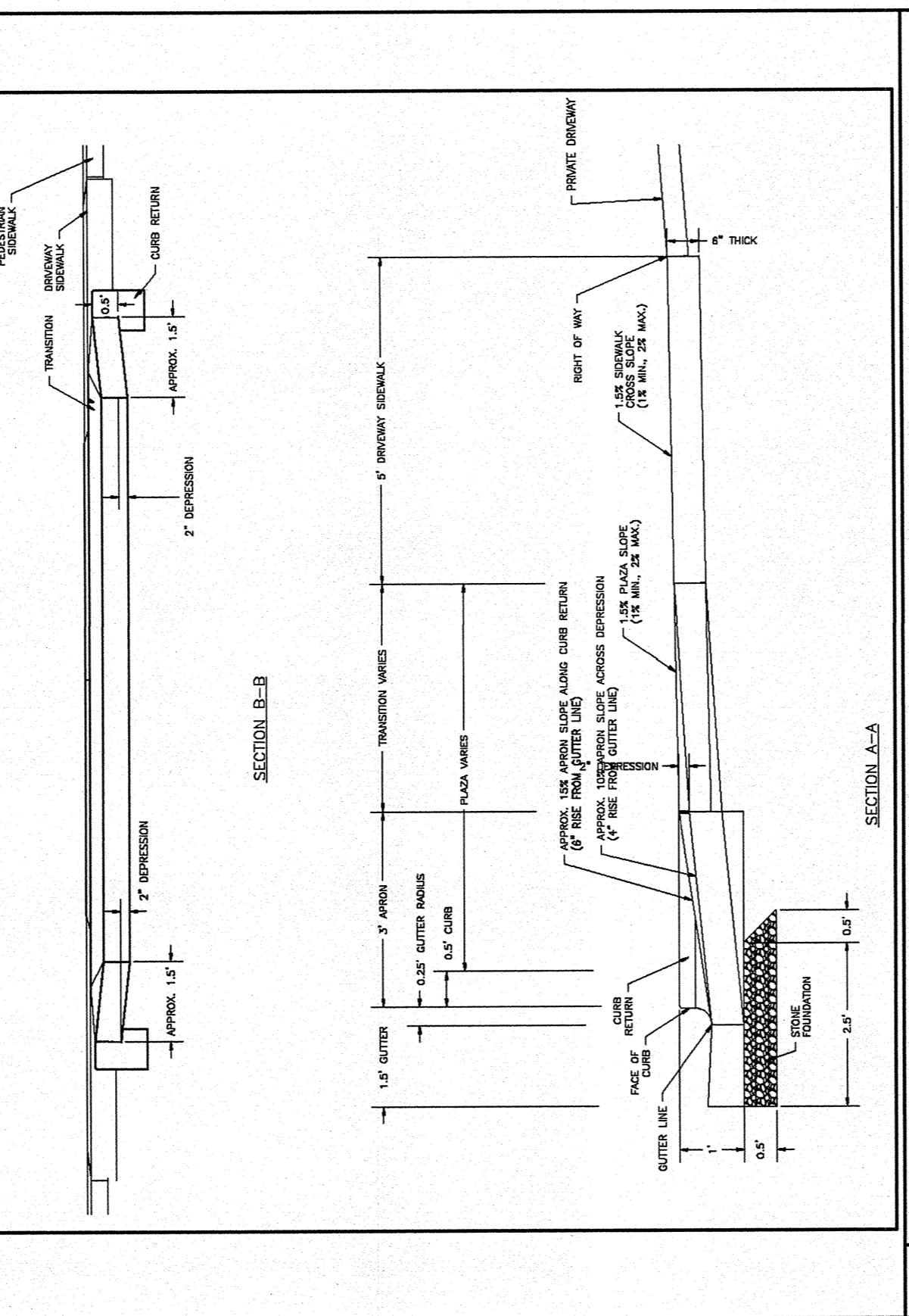
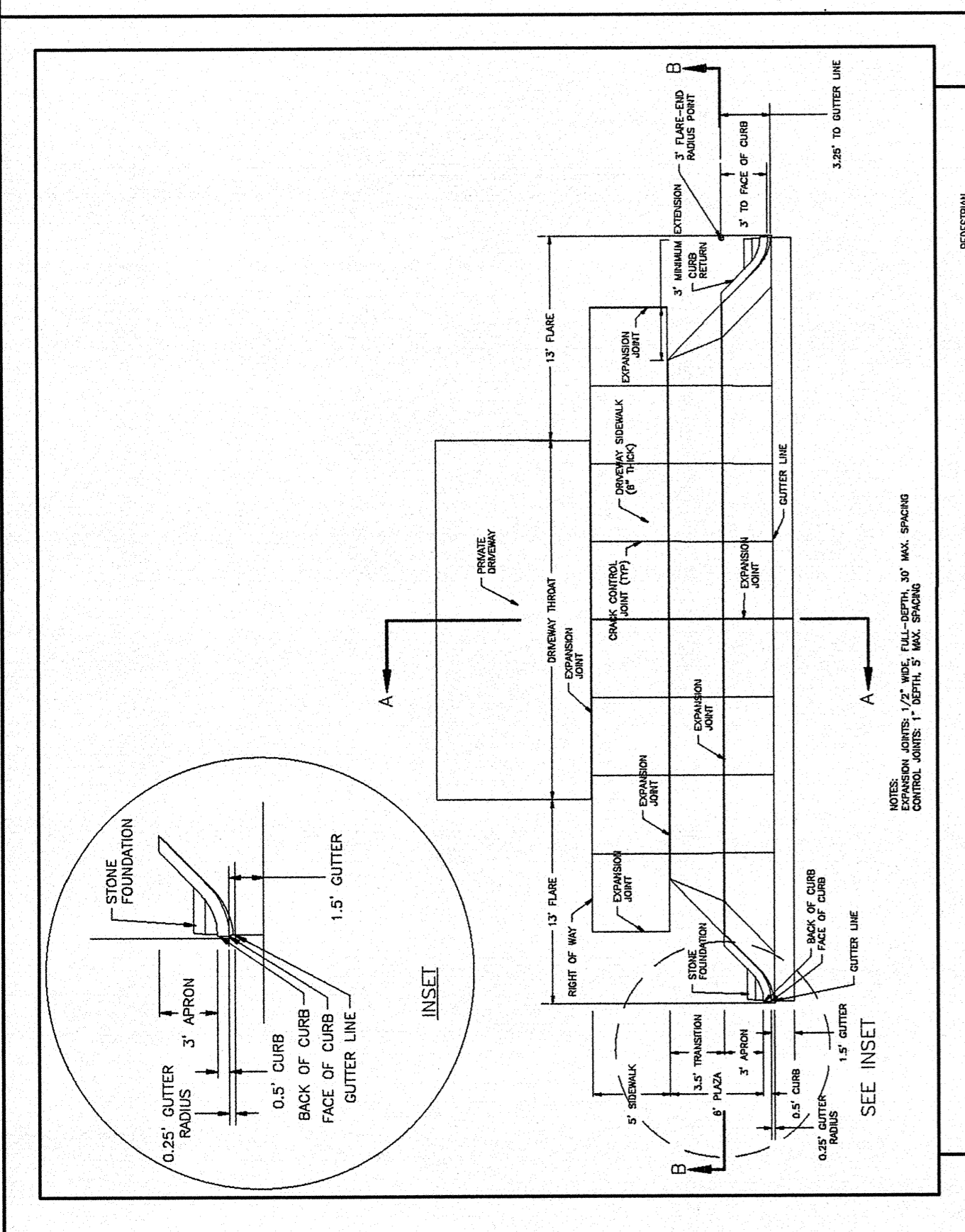
2 24" CURB AND GUTTER SECTION (FLOW-LINE) NOT TO SCALE



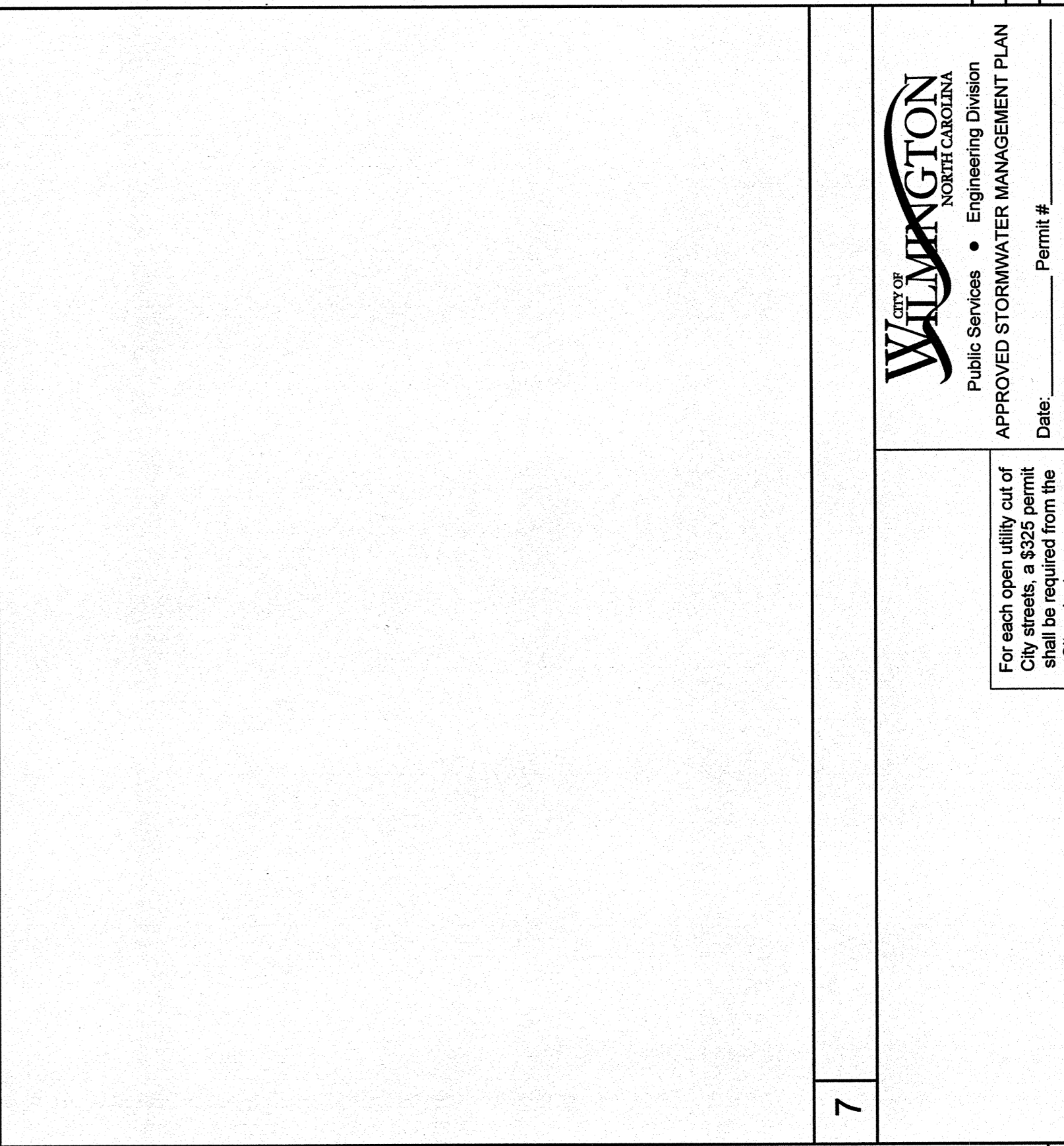
3 ASPHALT PAVEMENT SECTION NOT TO SCALE



4 HEAVY DUTY CONCRETE PAVEMENT SECTION NOT TO SCALE



5 STANDARD CITY OF WILMINGTON DRIVE WAY DETAIL



7 TIBURON DRIVE SECTION DETAIL

CITY OF WILMINGTON STANDARD NOTES:

- CONTACT THE NORTH CAROLINA ONE CALL CENTER PRIOR TO DOING ANY DIGGING AT 1-800-632-4949.
- PRIOR TO ANY CLEARING, GRADING OR CONSTRUCTION ACTIVITY, TREE PROTECTION FENCING WILL BE INSTALLED AROUND PROTECTED TREES AND SHRUBS. TYPES AND LOCATIONS OF TREE WORKERS, TOOLS OR DEVICES OR VEHICLES ARE PERMITTED WITHIN THE TREE PROTECTION FENCING.
- ALL PAVEMENT MARKINGS IN PUBLIC RIGHTS-OF-WAY AND FOR DRIVEWAYS ARE TO BE THERMOPLASTIC AND MEET CITY AND/OR NCDOT STANDARDS.
- ALL PARKING STALL MARKINGS AND LANE ARROWS WITHIN THE PARKING AREAS SHALL BE WHITE.
- INSTALL REFLECTORS PER CITY AND NCDOT STANDARDS. TRAFFIC ENGINEERING MUST APPROVE OF PAVEMENT MARKING LAYOUT PRIOR TO ACTUAL STRIPING.
- ALL TRAFFIC CONTROL SIGNS AND MARKINGS OFF THE RIGHT-OF-WAY ARE TO BE MAINTAINED BY THE PROPERTY OWNER IN ACCORDANCE WITH MUTCD STANDARDS.
- TRAFFIC CONTROL DEVICES (INCLUDING SIGNS AND PAVEMENT MARKINGS) IN AREAS OPEN TO PUBLIC TRAFFIC ARE TO MEET MUTCD (MANUAL ON UNIFORM TRAFFIC CONTROL DEVICES) STANDARDS.
- IT SHALL BE THE RESPONSIBILITY OF THE SUBDIVIDER TO ERECT OFFICIAL TRAFFIC SIGNS AND MARKINGS WITHIN THE TECHNICAL SURVEY AND SPECIFICATIONS MANUAL. THE SUBDIVIDER MAY ACQUIRE AND ERECT OFFICIAL STREET NAME SIGNS OR MAY CHOOSE TO CONTRACT WITH THE CITY TO INSTALL THE STREET SIGNS AND MARKINGS. THE SUBDIVIDER SHALL PAY THE COST OF SUCH INSTALLATION. INSTALLATION OF TRAFFIC AND STREET NAME SIGNS, POSTED STREET NAME SIGNS, MUST BE APPROVED PRIOR TO INSTALLATION OF STREET NAME SIGNS.
- CONTACT TRAFFIC ENGINEERING AT 341-7888 FORTY-EIGHT HOURS PRIOR TO ANY EXCAVATION IN THE RIGHT-OF-WAY.
- A UTILITY CUT PERMIT IS REQUIRED FOR EACH OPEN CUT OF A CITY STREET. CONTACT 341-5888 FOR MORE DETAILS. IN CERTAIN CASES AN ENTIRE RESURFACING OF THE AREA BEING OPEN CUT MAY BE REQUIRED.
- ANY BROKEN OR MISSING SIDEWALK PANELS, DRIVEWAY PANELS, AND CURBING WILL BE REPLACED.
- CONTACT TRAFFIC ENGINEERING AT 341-7888 TO DISCUSS STREET LIGHTING OPTIONS.
- PROJECT SHALL COMPLY WITH CTPUA CROSS CONNECTION CONTROL REQUIREMENTS. WATER METER(S) CANNOT BE RELEASED UNTIL ALL REQUIREMENTS ARE MET AND THE STATE HAS GIVEN THEIR FINAL APPROVAL. CALL 343-3910 FOR INFORMATION.
- IF THE CONTRACTOR DESIRES CTPUA WATER FOR CONSTRUCTION HE SHALL APPLY IN ADVANCE FOR THIS SERVICE AND MUST PROVIDE A REDUCED PRESSURE ZONE (RPZ) BACKFLOW PREVENTION DEVICE ON THE DEVELOPER'S SIDE OF THE WATER METER BOX.
- ANY IRRIGATION SYSTEM SUPPLIED BY CTPUA WATER SHALL COMPLY WITH CTPUA CROSS CONNECTION CONTROL REGULATIONS. CALL 332-6558 FOR INFORMATION.
- ANY BACKFLOW PREVENTION DEVICES REQUIRED BY CTPUA WILL NEED TO BE ON THE LIST OF APPROVED DEVICES BY USFCCC OR ASSE.
- WHEN PVC WATER MAINS AND/OR POLYETHYLENE SERVICES ARE PROPOSED, THE AREA AROUND THEM SHALL BE INSTALLED WITH A 1/2" COPPER WIRE MESH WITH 1/2" SPACING AND SECURED TO ALL VALVES. THIS WIRE IS TO BE ACCESSIBLE AT ALL FIRE HYDRANTS AND WATER METER BOXES TO AID IN FUTURE LOCATION OF FACILITIES.
- THE NUMBER AND SPACING OF DRIVEWAYS FOR ALL INTERCONNECTED SITES WILL BE DETERMINED BY THE COMBINED FRONTAGE OF THE INTERCONNECTED PROPERTIES.
- UNDERGROUND FIRE DEPARTMENT FROM THE PUBLIC ROW TO THE BUILDING. CONTACT THE WILMINGTON FIRE DEPARTMENT DIVISION OF FIRE AND LIFE SAFETY AT 910-343-0696 FOR ADDITIONAL INFORMATION.
- A LANDSCAPE PLAN INDICATING THE LOCATION OF REQUIRED STREET TREES SHALL BE SUBMITTED TO THE CITY PLANNING DEPARTMENT FOR REVIEW AND APPROVAL PRIOR TO THE RECORDING OF THE FINAL PLAT.
- IF AN IRRIGATION SYSTEM IS PLANNED FOR THE SITE, UTILIZE MOISTURE SENSORS.
- ALL PROPOSED VEGETATION WITHIN THE SIGHT TRIANGLES SHALL NOT INTERFERE WITH CLEAR VISUAL SIGHT LINES FROM 30'-10'.

UTILITY NOTES FOR FIRE HYDRANTS:

- FIRE HYDRANTS MUST BE WITHIN 150' OF THE FIRE DEPARTMENT CONNECTION.
- THE FIRE DEPARTMENT CONNECTION MUST BE WITHIN 40' OF FIRE APPARATUS PLACEMENT.
- LANDSCAPING AND PARKING CANNOT BLOCK OR IMPEDE THE FIRE SERVICE CONNECTION TO THE HYDRANT. THE FIRE SERVICE CONNECTION SHALL BE MAINTAINED AROUND THE CIRCUMFERENCE OF THE FIRE HYDRANT CONNECTION AND THE FIRE HYDRANT.
- FIRE HYDRANTS MUST BE LOCATED WITHIN 8' OF THE CURB.
- NEW HYDRANTS MUST BE AVAILABLE FOR USE PRIOR TO CONSTRUCTION OF THE BUILDINGS.
- NEW HYDRANTS MUST BE BROUGHT INTO SERVICE PRIOR TO COMBUSTIBLE MATERIALS BEING DELIVERED TO THE JOB SITE.
- THE CONTRACTOR SHALL MAINTAIN AN ALL WEATHER ACCESS FOR EMERGENCY VEHICLES AT ALL TIMES DURING CONSTRUCTION.
- TEMPORARY STREET SIGNS SHALL BE INSTALLED AT EACH STREET INTERSECTION WHEN CONSTRUCTION OF NEW ROADWAYS ALLOWS PASSAGE BY VEHICLES.
- UNDERGROUND FIRE LINE AND PRIVATE WATER MAINS MUST BE PERMITTED AND INSPECTED BY THE WILMINGTON FIRE DEPARTMENT FROM THE PUBLIC RIGHT-OF-WAY TO THE BUILDING. CONTACT THE WILMINGTON FIRE DEPARTMENT DIVISION OF FIRE AND LIFE SAFETY AT 910-343-0696 FOR ADDITIONAL INFORMATION.
- A MINIMUM OF 5' SHALL SEPARATE UNDERGROUND FIRE LINES OR PRIVATE WATER MAINS FROM OTHER UNDERGROUND UTILITIES.
- HYDRANTS SHALL BE SUFFICIENT DEPTHS TO ACCOMMODATE ALL FIRE DEPARTMENT REQUIREMENTS OF THE STRUCTURE.
- BUILDING CONSTRUCTION TYPE.

APPROVED CONSTRUCTION PLAN
 Name: **NORRIS & TUNSTALL**
 Planning
 Traffic
 Fire

REVISIONS

SYMBOL	DATE	DESCRIPTION	BY

© 2015 NORRIS & TUNSTALL

NOTES AND DETAILS
 LIVE OAK BANKING COMPANY 3/FITPARK
 1741 TIBURON DRIVE
 WILMINGTON, NORTH CAROLINA 28403

OWNER/DEVELOPER
 W. LEE WILLIAMS
 EXECUTIVE VICE PRESIDENT
 LIVE OAK BANKING COMPANY
 1741 TIBURON DRIVE
 WILMINGTON, NC 28403
 910-790-6868
 910-796-1647

NORRIS & TUNSTALL
 CONSULTING ENGINEERS P.C.
 429 ASH-LITTLE RIVER RD. NW
 ASH NC 28420
 PHONE (910) 282-5900

202 MARKET STREET
 WILMINGTON, NC 28401
 PHONE (910) 343-9633

License #C-3641
16169
 DES. JUST
 CDD. JPN
 DRWG. NKS
 DATE 5/17/17

C5

TIBURON PARC PARCELS BR & D

CITY OF WILMINGTON
NEW HANOVER COUNTY
NORTH CAROLINA

OWNER: THE OLEANDER COMPANY, INC. LIVE OAK BANKSHARES, INC.
1303-A INDEPENDENCE BLVD. 1741 TIBURON DRIVE
WILMINGTON, NC 28403 WILMINGTON, NC 28403

DATE: APRIL 21, 2017

CERTIFICATE OF APPROVAL BY THE CITY OF WILMINGTON SUBDIVISION REVIEW BOARD
THE CITY OF WILMINGTON SUBDIVISION REVIEW BOARD, HEREBY APPROVES FOR RECORDATION THE FINAL PLAT FOR
LAKESIDE PARK, LOT 86 PROVIDED THAT SAID PLAT IS RECORDED WITHIN (90) DAYS.

CHAIRMAN, SUBDIVISION
REVIEW BOARD

DATE _____

CERTIFICATE OF REGISTRATION BY REGISTER OF DEEDS

NORTH CAROLINA COUNTY _____ DAY OF 2017; AT _____ O'CLOCK
FILED FOR REGISTRATION IN MAP BOOK _____ PAGE _____
AND DULY RECORDED IN MAP BOOK _____ PAGE _____

BY: _____

REVIEW OFFICER OF THE CAPE FEAR
PUBLIC UTILITY AUTHORITY, NEW HANOVER COUNTY, NORTH CAROLINA,
HEREBY CERTIFIES THAT THE ABOVE DESCRIBED SUBDIVISION
MEETS ALL APPLICABLE STANDARDS AND REQUIREMENTS FOR THE PUBLIC
UTILITIES AS SET FORTH BY ORDINANCES, WITH THE RECORDATION OF THIS
PLAT. THE REVIEW OFFICER HAS CONDUCTED A VISUAL INSPECTION OF THE
OF RECORDATION FOR THE PUBLIC WATER AND/OR SEWER PURPOSES. ALL
EASEMENTS, COMMON AREAS, AND/OR RIGHT OF WAY SHOWN ON THE PLAT
AS DEDICATED FOR PUBLIC UTILITY PURPOSES, APPROVAL OF THIS PLAT DOES
NOT CONSTITUTE AN ENDORSEMENT OF THE WATER AND SEWER SERVICES, FOR THE
CAPE FEAR PUBLIC UTILITY AUTHORITY.

BY: REVIEW OFFICER _____ DATE _____

CERTIFICATE OF OWNERSHIP AND DEDICATION.
I (WE) HEREBY CERTIFY THAT I AM (WE ARE) THE OWNER(S) OF THE PROPERTY SHOWN
AND DESCRIBED HEREON AND THAT I (WE) HEREBY ADOPT THIS PLAN OF SUBDIVISION
WITH MY (OUR) OWN FREE CONSENT, ESTABLISH MINIMUM SETBACK LINES, AND DEDICATE
TO THE PUBLIC THE STREETS AND ALLEYS SHOWN ON THIS PLAN. I (WE) HEREBY
ALL PRIVATE STREETS FOR WATER AND SEWER LINES AND APPURTENANCES. FURTHER, I
(WE) CERTIFY THE LAND AS SHOWN HEREON IS WITHIN THE JURISDICTION OF THE
CITY OF WILMINGTON, NORTH CAROLINA.

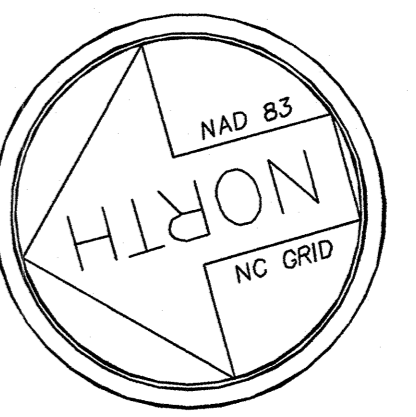
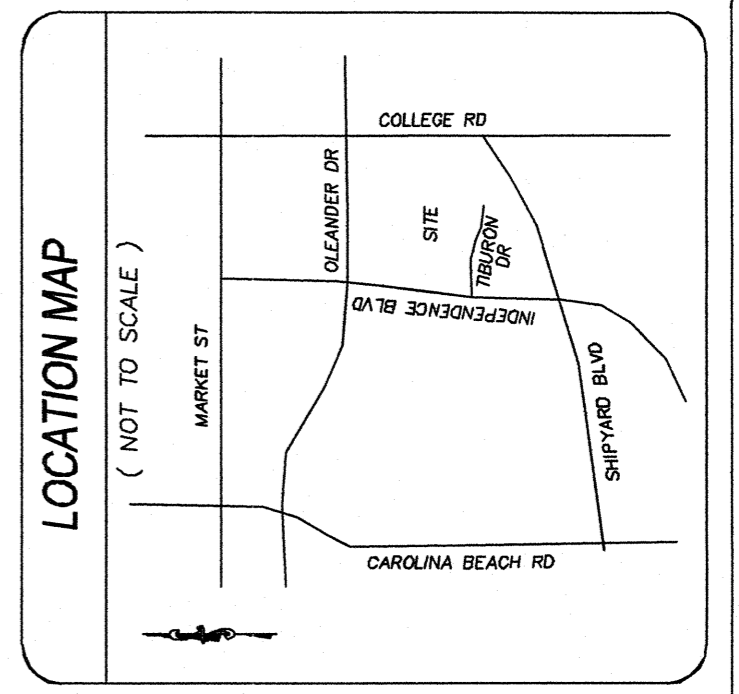
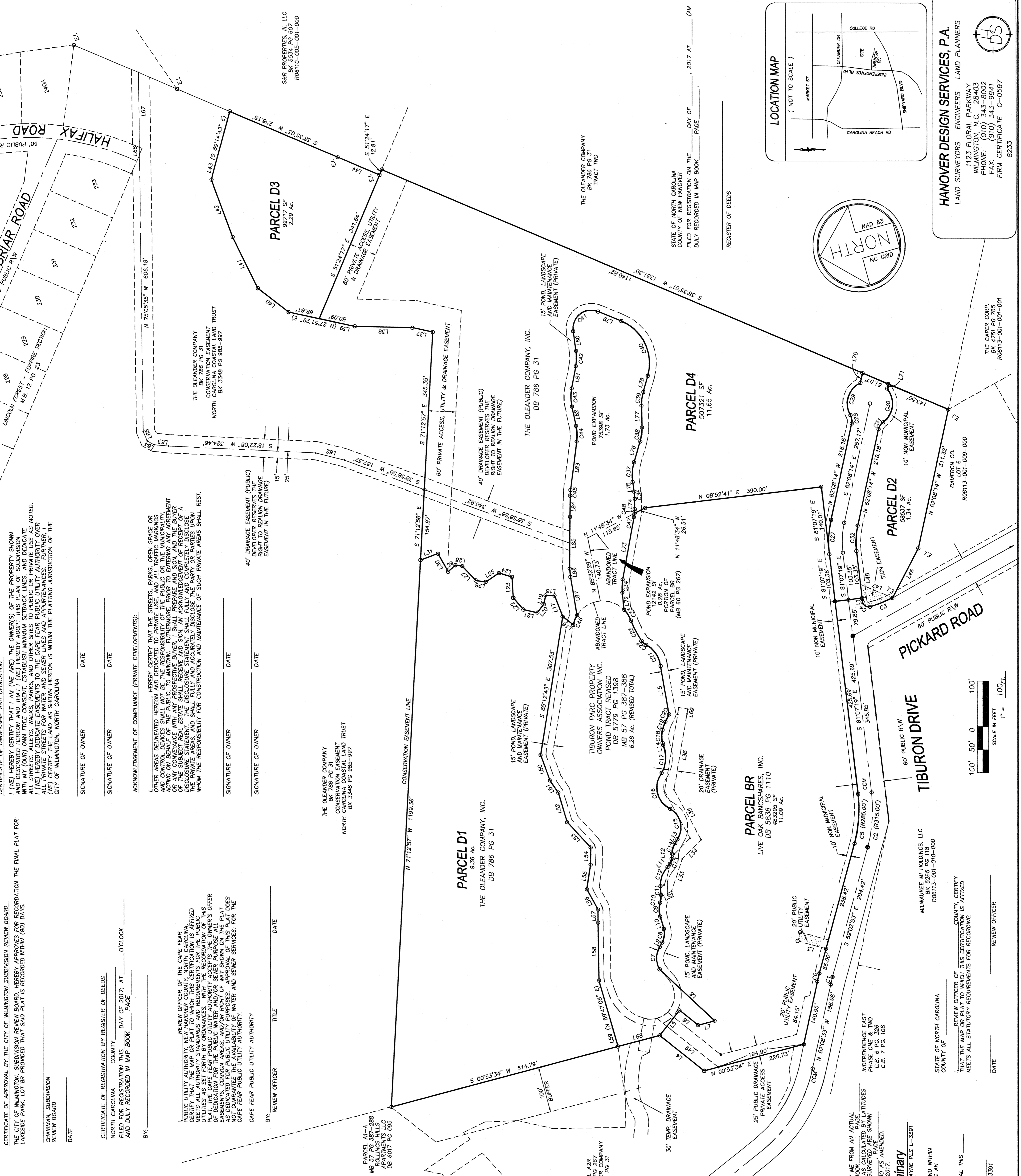
SIGNATURE OF OWNER _____ DATE _____

SIGNATURE OF OWNER _____ DATE _____

ACKNOWLEDGEMENT OF COMPLIANCE (PRIVATE DEVELOPMENTS):
OTHER AREAS DELINEATED HEREON AND DEDICATED TO PRIVATE USE AND ALL TRAFFIC MARKINGS
ACTING ON BEHALF OF THE PUBLIC TO MAINTAIN, FURTHERMORE, PRIOR TO ENTERING ANY AGREEMENT
OF THE SUBJECT REAL ESTATE SHALL RECEIVE AND SIGN AN ACKNOWLEDGEMENT OF RECEIPT OF A
DISCLOSURE STATEMENT. THE DISCLOSURE STATEMENT SHALL FULLY AND COMPLETELY DISCLOSE
THE PRIVATE WATER AND SEWER LINES AND APPURTENANCES SHOWN ON THIS PLAN AND SHALL
WHOM THE RESPONSIBILITY FOR CONSTRUCTION AND MAINTENANCE OF SUCH PRIVATE AREAS SHALL REST.

SIGNATURE OF OWNER _____ DATE _____

SIGNATURE OF OWNER _____ DATE _____



HANOVER DESIGN SERVICES, P.A.
LAND SURVEYORS ENGINEERS LAND PLANNERS
1123 FLORAL PARKWAY
WILMINGTON, N.C. 28403
PHONE: (910) 343-8002
FAX: (910) 343-0941
FIRM CERTIFICATE C-0597
8233

THE CAPER CORP.
BK 4751 PG 785
ROB113-001-001

CAMERON CO.
ROB113-001-009-000

SCALE IN FEET
1" = 100'
100' 50' 0' 100'

REVIEW OFFICER _____
DATE _____
COUNTY OFFICER _____
MEETS ALL STATUTORY REQUIREMENTS FOR RECORDING.

PRELIMINARY
JONATHAN L. WAYNE PLS L-3387

NOTES:
1. AREA COMPUTED BY COORDINATE METHOD
2. ALL DISTANCES ARE HORIZONTAL
3. FOR REFERENCE SEE AS NOTED
4. SURVEYED JULY 2002 - APRIL 2017
5. 42.74 ACRES TOTAL AREA
6. ALL CORNERS UNLESS OTHERWISE NOTED

LINE BEARING	DISTANCE	CURVE RADIUS	ARC LENGTH	CHORD	BEARINGS DELTA ANGLE	ANGULAR DISTANCE
L1	N 89°19'19" E	8.24	17.00	17.00	0	8.24
L2	N 89°19'19" E	8.24	17.00	17.00	0	8.24
L3	N 89°19'19" E	8.24	17.00	17.00	0	8.24
L4	N 89°19'19" E	8.24	17.00	17.00	0	8.24
L5	N 89°19'19" E	8.24	17.00	17.00	0	8.24
L6	N 89°19'19" E	8.24	17.00	17.00	0	8.24
L7	N 89°19'19" E	8.24	17.00	17.00	0	8.24
L8	N 89°19'19" E	8.24	17.00	17.00	0	8.24
L9	N 89°19'19" E	8.24	17.00	17.00	0	8.24
L10	N 89°19'19" E	8.24	17.00	17.00	0	8.24
L11	N 89°19'19" E	8.24	17.00	17.00	0	8.24
L12	N 89°19'19" E	8.24	17.00	17.00	0	8.24
L13	N 89°19'19" E	8.24	17.00	17.00	0	8.24
L14	N 89°19'19" E	8.24	17.00	17.00	0	8.24
L15	N 89°19'19" E	8.24	17.00	17.00	0	8.24
L16	N 89°19'19" E	8.24	17.00	17.00	0	8.24
L17	N 89°19'19" E	8.24	17.00	17.00	0	8.24
L18	N 89°19'19" E	8.24	17.00	17.00	0	8.24
L19	N 89°19'19" E	8.24	17.00	17.00	0	8.24
L20	N 89°19'19" E	8.24	17.00	17.00	0	8.24
L21	N 89°19'19" E	8.24	17.00	17.00	0	8.24
L22	N 89°19'19" E	8.24	17.00	17.00	0	8.24
L23	N 89°19'19" E	8.24	17.00	17.00	0	8.24
L24	N 89°19'19" E	8.24	17.00	17.00	0	8.24
L25	N 89°19'19" E	8.24	17.00	17.00	0	8.24
L26	N 89°19'19" E	8.24	17.00	17.00	0	8.24
L27	N 89°19'19" E	8.24	17.00	17.00	0	8.24
L28	N 89°19'19" E	8.24	17.00	17.00	0	8.24
L29	N 89°19'19" E	8.24	17.00	17.00	0	8.24
L30	N 89°19'19" E	8.24	17.00	17.00	0	8.24
L31	N 89°19'19" E	8.24	17.00	17.00	0	8.24
L32	N 89°19'19" E	8.24	17.00	17.00	0	8.24
L33	N 89°19'19" E	8.24	17.00	17.00	0	8.24
L34	N 89°19'19" E	8.24	17.00	17.00	0	8.24
L35	N 89°19'19" E	8.24	17.00	17.00	0	8.24
L36	N 89°19'19" E	8.24	17.00	17.00	0	8.24
L37	N 89°19'19" E	8.24	17.00	17.00	0	8.24
L38	N 89°19'19" E	8.24	17.00	17.00	0	8.24
L39	N 89°19'19" E	8.24	17.00	17.00	0	8.24
L40	N 89°19'19" E	8.24	17.00	17.00	0	8.24
L41	N 89°19'19" E	8.24	17.00	17.00	0	8.24
L42	N 89°19'19" E	8.24	17.00	17.00	0	8.24
L43	N 89°19'19" E	8.24	17.00	17.00	0	8.24
L44	N 89°19'19" E	8.24	17.00	17.00	0	8.24
L45	N 89°19'19" E	8.24	17.00	17.00	0	8.24
L46	N 89°19'19" E	8.24	17.00	17.00	0	8.24
L47	N 89°19'19" E	8.24	17.00	17.00	0	8.24
L48	N 89°19'19" E	8.24	17.00	17.00	0	8.24
L49	N 89°19'19" E	8.24	17.00	17.00	0	8.24
L50	N 89°19'19" E	8.24	17.00	17.00	0	8.24
L51	N 89°19'19" E	8.24	17.00	17.00	0	8.24
L52	N 89°19'19" E	8.24	17.00	17.00	0	8.24
L53	N 89°19'19" E	8.24	17.00	17.00	0	8.24
L54	N 89°19'19" E	8.24	17.00	17.00	0	8.24
L55	N 89°19'19" E	8.24	17.00	17.00	0	8.24
L56	N 89°19'19" E	8.24	17.00	17.00	0	8.24
L57	N 89°19'19" E	8.24	17.00	17.00	0	8.24
L58	N 89°19'19" E	8.24	17.00	17.00	0	8.24
L59	N 89°19'19" E	8.24	17.00	17.00	0	8.24
L60	N 89°19'19" E	8.24	17.00	17.00	0	8.24
L61	N 89°19'19" E	8.24	17.00	17.00	0	8.24
L62	N 89°19'19" E	8.24	17.00	17.00	0	8.24
L63	N 89°19'19" E	8.24	17.00	17.00	0	8.24
L64	N 89°19'19" E	8.24	17.00	17.00	0	8.24
L65	N 89°19'19" E	8.24	17.00	17.00	0	8.24
L66	N 89°19'19" E	8.24	17.00	17.00	0	8.24
L67	N 89°19'19" E	8.24	17.00	17.00	0	8.24
L68	N 89°19'19" E	8.24	17.00	17.00	0	8.24
L69	N 89°19'19" E	8.24	17.00	17.00	0	8.24
L70	N 89°19'19" E	8.24	17.00	17.00	0	8.24
L71	N 89°19'19" E	8.24	17.00	17.00	0	8.24
L72	N 89°19'19" E	8.24	17.00	17.00	0	8.24
L73	N 89°19'19" E	8.24	17.00	17.00	0	8.24
L74	N 89°19'19" E	8.24	17.00	17.00	0	8.24
L75	N 89°19'19" E	8.24	17.00	17.00	0	8.24
L76	N 89°19'19" E	8.24	17.00	17.00	0	8.24
L77	N 89°19'19" E	8.24	17.00	17.00	0	8.24
L78	N 89°19'19" E	8.24	17.00	17.00	0	8.24
L79	N 89°19'19" E	8.24	17.00	17.00	0	8.24
L80	N 89°19'19" E	8.24	17.00	17.00	0	8.24
L81	N 89°19'19" E	8.24	17.00	17.00	0	8.24
L82	N 89°19'19" E	8.24	17.00	17.00	0	8.24
L83	N 89°19'19" E	8.24	17.00	17.00	0	8.24
L84	N 89°19'19" E	8.24	17.00	17.00	0	8.24
L85	N 89°19'19" E	8.24	17.00	17.00	0	8.24
L86	N 89°19'19" E	8.24	17.00	17.00	0	8.24
L87	N 89°19'19" E	8.24	17.00	17.00	0	8.24

CERTIFICATE OF ACCURACY AND MAPPING
I, JONATHAN L. WAYNE, CERTIFY THAT THIS MAP WAS DRAWN BY ME FROM AN ACTUAL
SURVEY MADE UNDER MY SUPERVISION. DEED DESCRIPTION IN BOOK _____ PAGE _____
BOOK REPARTURES G.S. 1-101, 1-102, 1-103, 1-104, 1-105, 1-106, 1-107, 1-108, 1-109, 1-110, 1-111, 1-112, 1-113, 1-114, 1-115, 1-116, 1-117, 1-118, 1-119, 1-120, 1-121, 1-122, 1-123, 1-124, 1-125, 1-126, 1-127, 1-128, 1-129, 1-130, 1-131, 1-132, 1-133, 1-134, 1-135, 1-136, 1-137, 1-138, 1-139, 1-140, 1-141, 1-142, 1-143, 1-144, 1-145, 1-146, 1-147, 1-148, 1-149, 1-150, 1-151, 1-152, 1-153, 1-154, 1-155, 1-156, 1-157, 1-158, 1-159, 1-160, 1-161, 1-162, 1-163, 1-164, 1-165, 1-166, 1-167, 1-168, 1-169, 1-170, 1-171, 1-172, 1-173, 1-174, 1-175, 1-176, 1-177, 1-178, 1-179, 1-180, 1-181, 1-182, 1-183, 1-184, 1-185, 1-186, 1-187, 1-188, 1-189, 1-190, 1-191, 1-192, 1-193, 1-194, 1-195, 1-196, 1-197, 1-198, 1-199, 1-200, 1-201, 1-202, 1-203, 1-204, 1-205, 1-206, 1-207, 1-208, 1-209, 1-210, 1-211, 1-212, 1-213, 1-214, 1-215, 1-216, 1-217, 1-218, 1-219, 1-220, 1-221, 1-222, 1-223, 1-224, 1-225, 1-226, 1-227, 1-228, 1-229, 1-230, 1-231, 1-232, 1-233, 1-234, 1-235, 1-236, 1-237, 1-238, 1-239, 1-240, 1-241, 1-242, 1-243, 1-244, 1-245, 1-246, 1-247, 1-248, 1-249, 1-250, 1-251, 1-252, 1-253, 1-254, 1-255, 1-256, 1-257, 1-258, 1-259, 1-260, 1-261, 1-262, 1-263, 1-264, 1-265, 1-266, 1-267, 1-268, 1-269, 1-270, 1-271, 1-272, 1-273, 1-274, 1-275, 1-276, 1-277, 1-278, 1-279, 1-280, 1-281, 1-282, 1-283, 1-284, 1-285, 1-286, 1-287, 1-288, 1-289, 1-290, 1-291, 1-292, 1-293, 1-294, 1-295, 1-296, 1-297, 1-298, 1-299, 1-300, 1-301, 1-302, 1-303, 1-304, 1-305, 1-306, 1-307, 1-308, 1-309, 1-310, 1-311, 1-312, 1-313, 1-314, 1-315, 1-316, 1-317, 1-318, 1-319, 1-320, 1-321, 1-322, 1-323, 1-324, 1-325, 1-326, 1-327, 1-328, 1-329, 1-330, 1-331, 1-332, 1-333, 1-334, 1-335, 1-336, 1-337, 1-338, 1-339, 1-340, 1-341, 1-342, 1-343, 1-344, 1-345, 1-346, 1-347, 1-348, 1-349, 1-350, 1-351, 1-352, 1-353, 1-354, 1-355, 1-356, 1-357, 1-358, 1-359, 1-360, 1-361, 1-362, 1-363, 1-364, 1-365, 1-366, 1-367, 1-368, 1-369, 1-370, 1-371, 1-372, 1-373, 1-374, 1-375, 1-376, 1-377, 1-378, 1-379, 1-380, 1-381, 1-382, 1-383, 1-384, 1-385, 1-386, 1-387, 1-388, 1-389, 1-390, 1-391, 1-392, 1-393, 1-394, 1-395, 1-396, 1-397, 1-398, 1-399, 1-400, 1-401, 1-402, 1-403, 1-404, 1-405, 1-406, 1-407, 1-408, 1-409, 1-410, 1-411, 1-412, 1-413, 1-414, 1-415, 1-416, 1-417, 1-418, 1-419, 1-420, 1-421, 1-422, 1-423, 1-424, 1-425, 1-426, 1-427, 1-428, 1-429, 1-430, 1-431, 1-432, 1-433, 1-434, 1-435, 1-436, 1-437, 1-438, 1-439, 1-440, 1-441, 1-442, 1-443, 1-444, 1-445, 1-446, 1-447, 1-448, 1-449, 1-450, 1-451, 1-452, 1-453, 1-454, 1-455, 1-456, 1-457, 1-458, 1-459, 1-460, 1-461, 1-462, 1-463, 1-464, 1-465, 1-466, 1-467, 1-468, 1-469, 1-470, 1-471, 1-472, 1-473, 1-474, 1-475, 1-476, 1-477, 1-478, 1-479, 1-480, 1-481, 1-482, 1-483, 1-484, 1-485, 1-486, 1-487, 1-488, 1-489, 1-490, 1-491, 1-492, 1-493, 1-494, 1-495, 1-496, 1-497, 1-498, 1-499, 1-500, 1-501, 1-502, 1-503, 1-504, 1-505, 1-506, 1-507, 1-508, 1-509, 1-510, 1-511, 1-512, 1-513, 1-514, 1-515, 1-516, 1-517, 1-518, 1-519, 1-520, 1-521, 1-522, 1-523, 1-524, 1-525, 1-526, 1-527, 1-528, 1-529, 1-530, 1-531, 1-532, 1-533, 1-534, 1-535, 1-536, 1-537, 1-538, 1-539, 1-540, 1-541, 1-542, 1-543, 1-544, 1-545, 1-546, 1-547, 1-548, 1-549, 1-550, 1-551, 1-552, 1-553, 1-554, 1-555, 1-556, 1-557, 1-558, 1-559, 1-560, 1-561, 1-562, 1-563, 1-564, 1-565, 1-566, 1-567, 1-568, 1-569, 1-570, 1-571, 1-572, 1-573, 1-574, 1-575, 1-576, 1-577, 1-578, 1-579, 1-580, 1-581, 1-582, 1-583, 1-584, 1-585, 1-586, 1-587, 1-588, 1-589, 1-590, 1-591, 1-592, 1-593, 1-594, 1-595, 1-